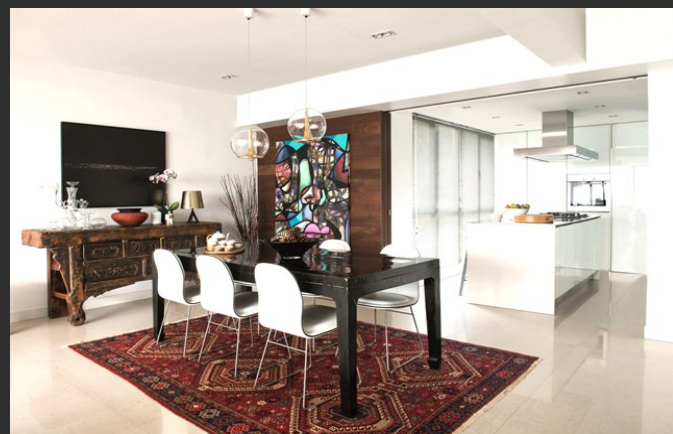




CAPE MANSION 02

Building on my experience with this apartment block, I designed the space to showcase to our clients collection of artifacts and treasures collected during their travels. Colour, texture and pattern are used throughout to enliven and invigorate the environment. The rooms have a rich and inviting atmosphere while retaining an understated elegance. Close attention was paid to the detailing of the furniture to produce a fashionable yet timeless setting.





A 2000 SF apartment in Pokfulam, Hong Kong. Completed at breakneck speed. The clients were a couple of design professionals looking to simplify their lifestyle. Internal wall were removed and reconfigured to allow for open plan, all inclusive, living. A series of interconnected rooms best suited the clients needs. Ease of movement between these spaces and the amazing sea views from all rooms defines the apartment and makes for a serene and calming experience.



CAPE MANSION 01



MOUNT DAVID ROAD

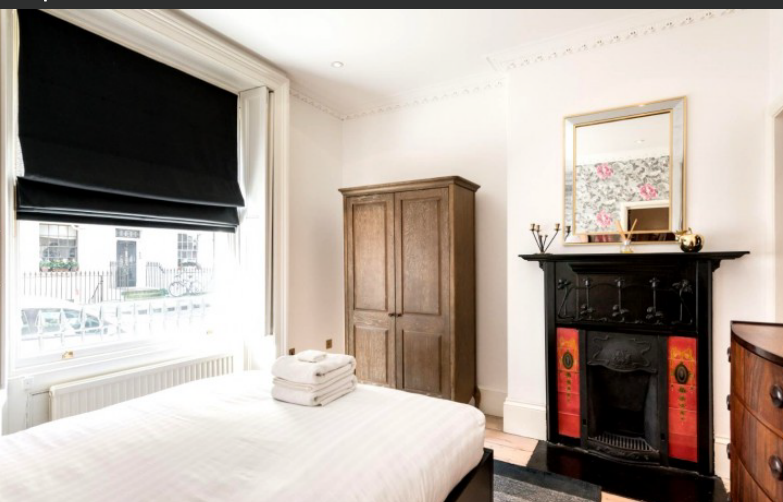
Client wanted the apartment to reflect her Nordic heritage and was invested in a more sophisticated look now that her children were away at school. The result is a bright and light space with full sea views from all rooms. The simple yet stylish interior allows the artwork to be the focus of the main living space, something the client was particularly keen to achieve. The Scandinavian style furniture complements and adds to the overall feeling of harmonious living.





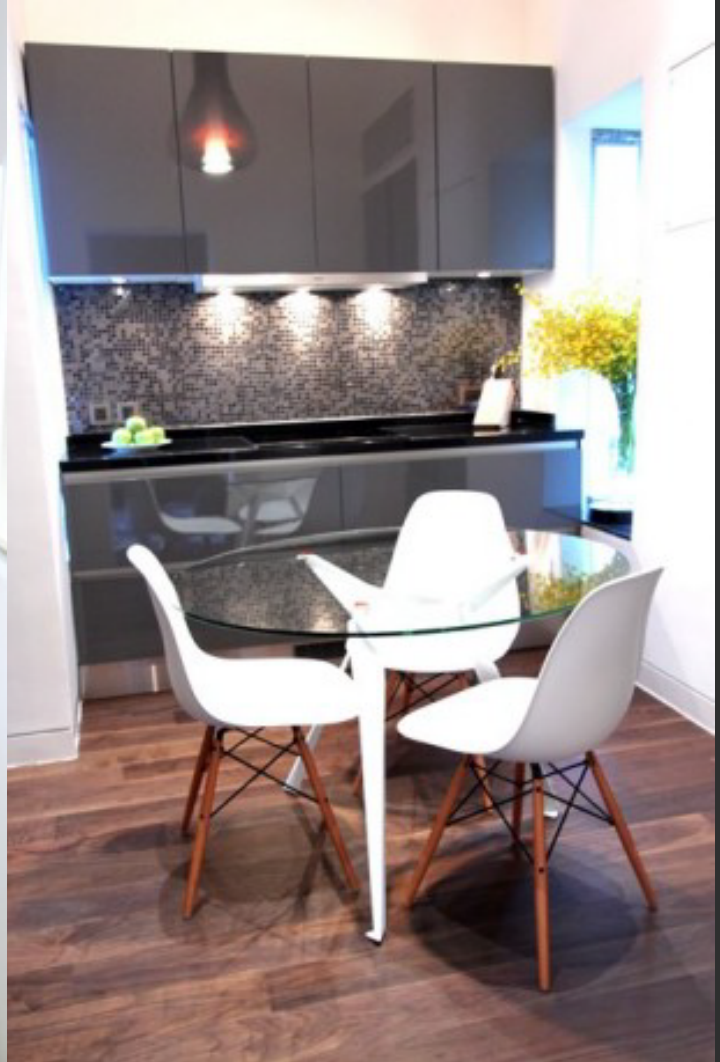
BALCOBE LONDON

Wanted to fuse the character of this London heritage building with the needs of our clients modern lifestyle. The main living, dining and kitchen areas are on the lower level and make this a contemporary space without losing the Victorian character. We love the flow of space and the layering of decoration which gives this apartment its cosy feel, a perfect combination of Hong Kong and London style.



DAISY COURT

This project was for a corporate client specializing in serviced apartments who wanted to renovate a 22 storey tower block. The concept was to design apartments to create a sense of individuality. The brief was developed according to the clients intentions and a basic, highly efficient plan was used throughout for all apartments while colours, fabrics and textures were varied. The development was topped off by a spectacular penthouse apartment, so desirable that the client kept it for his own use.





OLD PEAK ROAD



2600 SF apartment in Central Midlevels, Hong Kong. The clients were a newly married couple who wanted the apartment to reflect their cosmopolitan lifestyle but which could accommodate a family later. Quality of materials and fabrics and the use of unique decorative elements make for an opulent yet relaxing space. "I loved the clients eagerness to engage with the design.



OLD PEAK ROAD

DORSET SQUARE, LONDON

1000 SF in Marylebone. The apartment was designed and managed from Hong Kong. The success of the project relied on communicating our clients needs to our team of building professionals in London. The apartment was extensively remodeled, rooms were enlarged, bathrooms added and the kitchen refurbished. The transformation was remarkable. Now, the interior is cool and contemporary, rich with heritage features and a touch of Chinese style.





LEON COURT

2800SF at Wong Nai Chung Gap, Hong Kong. A design conscious client with a growing family meant that this space was worked hard. A master bedroom with unsuited and walk in wardrobe, with further bedrooms with unsuited, a baby room, and a family bathroom all designed to work effortlessly together with large, glamorous lounge and dining room. A stylish yet practical family home.





REGENT ON THE PARK



REGENT ON THE PARK

An 1600 SF apartment in Midlevels East, Hong Kong. Work commitments meant that the client was looking for a designer he could trust with complete autonomy to make creative and practical decisions on his behalf. The space was reorganized to enlarge the main lounge and dining area while making the bedrooms more efficient and convenient. Storage and ensuite bathrooms were added. The apartment emerged from its previous awkwardness into an easy going and appealing space.







An 2600 SF apartment in Midlevels, Hong Kong. A client with a large, boisterous family but with a keen eye for design. The organisation of areas for work, rest and play became the key to this project. To facilitate the different needs of daily family life, a neutral backdrop was created by the use of cool and light coloured materials. This was then warmed by the careful use of timber finishes. A hard working space for a fast living family.

SCENIC VILLAS



SCENIC VILLAS

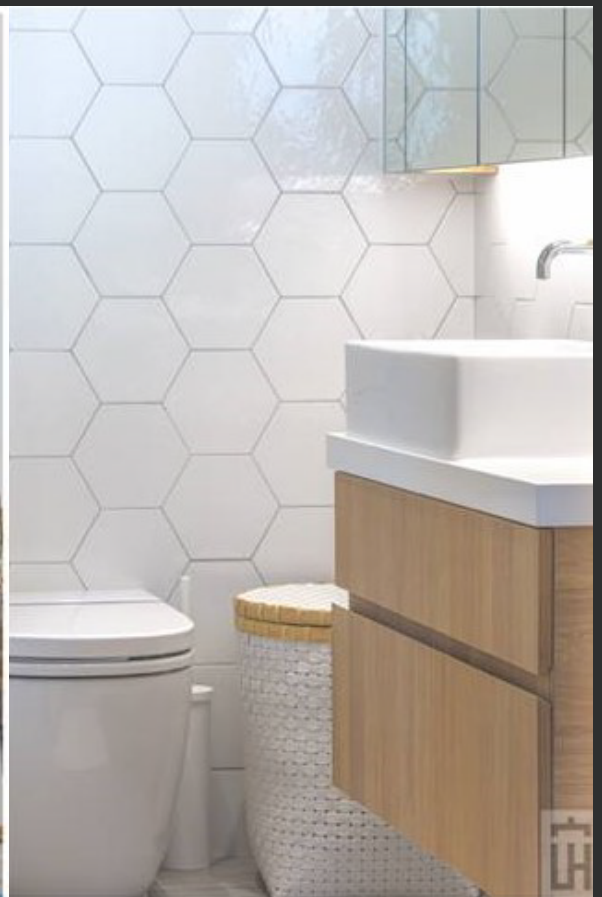
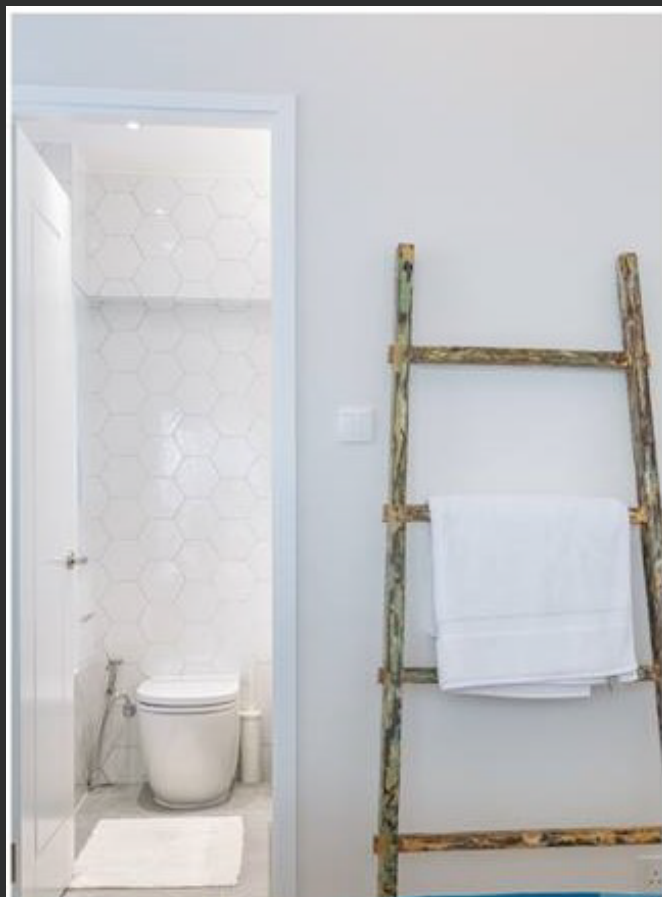


@CENTRAL 6B





@CENTRAL 6B





@CENTRAL 6B





@CENTRAL 6B



2000 SF apartment in Midlevels, Hong Kong. Previously, a duplex with small rooms and no outlook. All the existing walls were demolished and a marvellous space was revealed. Drama was added by the placement of a sinuous twisting steel staircase to connect the two levels. The combination of dark timber floors, blackened steelwork, handmade ceramic tiles and decorative panelling and wallpaper made for a striking interior.



KAM NING MANSION